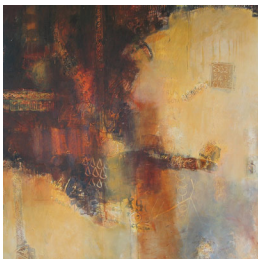
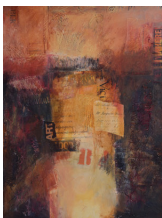


# ANN BALDWIN: SCRIPTOPICS AT THE KARPELES MUSEUM SANTA BARBARA

The neighboring ARTAMO GALLERY and Karpeles Museum in Santa Barbara joined forces to present Scriptopics, a series of paintings by Ann Baldwin, from London, England. Her collage-style work reflects her love of literature showing an emotional response to the theatre by layering texts and images from old programs and incorporating excerpts from manuscripts on her large canvases.



ALL  
WORKS  
ARE  
AVAILABLE  
THROUGH  
ARTAMO  
ART



FROM TOP LEFT TO RIGHT:  
*Rooocooceed*, *Altimori*, *Statuta II*,  
*Mandragora*, *Time Difference*,  
*Revisions*, *Memorandum*  
acrylic & mixed media on canvas  
60" x 48"; 48" x 48"; 40" x 30"

ARTAMO ART

SANTA BARBARA • CALIFORNIA 93105 • PHONE 805.452.6605 • EMAIL INFO@ARTAMO.ART • INTERNET WWW.ARTAMO.ART



## **ANN BALDWIN**

Ann Baldwin, born and raised in London, England, studied literature at the Universities of Sussex and London and taught literature and drama in London. Ann began painting seriously in 1991, after moving to the San Francisco area. Initially a traditional watercolorist, she gradually

moved towards collage and mixed media painting. Over time her style became more abstract, often including text from medieval documents or works of literature. Recently she began incorporating her photographs in her new 'photo paintings' which include landscape elements alongside abstract passages.

Ann Baldwin's has exhibited her work in many solo exhibitions and in over 150 juried group shows nationwide. It was also featured in Books and Magazines. In 2008 she was asked by Quarry Books to write a book on Mixed Media painting. "Creative Paint Workshop for Mixed Media Artists" was published in 2009. Over the last decade many of her works were featured in Hollywood film and TV sets.

### **SELECTED SOLO EXHIBITIONS**

The Karpeles Museum, Santa Barbara; Artamo Gallery, Santa Barbara; M. Gabriel Fine Art, Sonoma; Center for Creative Arts, Fairfield; Cannonball Fine Art, San Anselmo; Imani Gallery, Napa; Writers' Center of Marin, San Rafael; Merced College Art Gallery, Merced; Gallery One, Petaluma; City Hall, Mill Valley; UCSF, San Francisco; Gallery at the Top, Mill Valley; University YWCA, Berkeley, California

### **TV & MOVIE PRODUCTIONS WITH ANN BALDWIN'S ART**

*The Number 23* (w. Jim Carrey); *Enbrel* (pharma ad); *The Break-Up* (w. Jennifer Aniston); *Community Service*; *Rendition* (w. Reece Witherspoon); *The Bucket List* (w. Jack Nicholson); *24* (w. Kiefer Sutherland); *Out of Practice*; *A Day in the Life*; *Shark*; *Alvin & the Chipmunks*; *Eli Stone*; *Six Feet Under*; *ER*; *Becker* (w. Ted Danson); *One on One*; *Twins*; *The Adventurers*; *Two-and-a-Half Men*; *Entourage* (w. Mark Wahlberg); *My Ex-Life*; *Weeds* (w. David Duchovny); *20 Good Years*; *2 Fights*; *2 Miles of Bad Road*; *Monk*; *Fruit of a Loom* (commercial); *Marlowe*; *The Company Men* (w. Ben Affleck, Kevin Costner); *Crossing Over* (w. Harrison Ford, Ashley Judd); *Ben 10 Live*; *The Night Watchman* (documentary); *House* (w. Hugh Laurie); *New Adventures of Old Christine* (w. Julia Louis-Dreyfus); *Steven Seagal: Lawman*; *American Family* (w. Edward James Olmos); *Otis*; *The Guilt Trip* (w. Barbra Streisand).

**ALL PAINTINGS ARE AVAILABLE THROUGH ARTAMO.ART**